

DO NOT RETURN PRODUCT TO STORE

If there is an issue with your 3D Light FX product please contact us at mylight@3dlightfx.com

WARNING!

This product is not a toy. DO NOT mount in reach of children.



Important Safety Instructions

- For indoor use only.
- Do not use in or near water.
- Mount only on a surface that is structurally sound.
- Do not mount near gas or electric heaters, fireplaces, candles, or other sources of heat.


Important Safety Instructions when using Batteries with this product.

- Placing the batteries for the first time and replacing the batteries should be done by adults only.
- Use 3 x AA batteries only.
- Turn Light off during the day to conserve battery life.
- Dispose of batteries safely.

Instructional Video available at: www.3DlightFX.com

STICKER INSTRUCTIONS

Please read all instructions first before applying sticker and mounting light.

 You can apply your wall sticker to any smooth flat surface but make sure it is **clean of dirt or grit and completely dry**. Newly painted walls need at least 2 weeks before applying sticker.

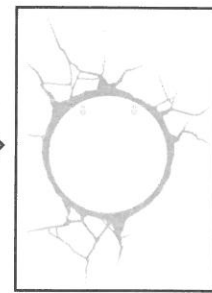
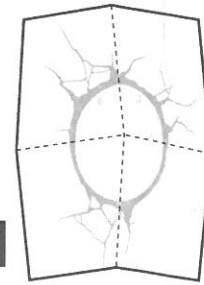
1. Unfold sticker and flatten creases.
2. Place sticker at desired location, place tape (painter's tape or similar) at the edge of the top of the sticker and mark arrows on tape and sticker for placement reference.
3. Carefully remove the back of the sticker.
4. Align arrows and carefully stick the top (top 1-2 inches) of the sticker to wall, make sure you hold the bottom portion away from wall.
5. Use a credit card or dull flat surface to slowly adhere the sticker, pressing against the paper backing, removing any air bubbles that may arise, remember to keep the bottom part of the sticker off the wall as you work your way down, out and towards the edges until the end.
6. Very slowly peel off the paper from the wall, making sure that the (*fine edges) are stuck to wall. If any of the sticker peels up with the paper, simply put back against wall and press firmly with credit card until sticker adheres to wall.
7. Drill a hole in the spaces marked X and insert the wall plug provided. Insert the screws provided to approximately $\frac{3}{4}$ of the way and place light onto screws.

REMOVING THE 3D CRACK STICKER

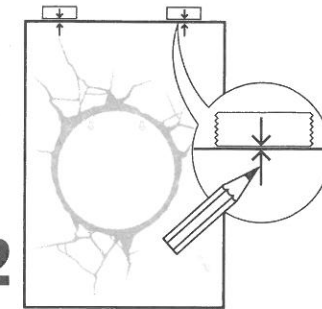
To remove the 3D Crack Sticker without damaging your paint/wall please go to www.3DlightFX.com and click on instructions.



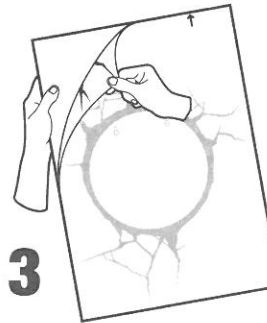
1



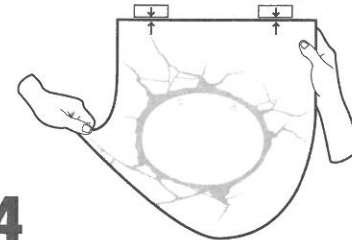
2



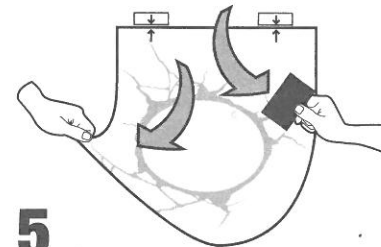
3



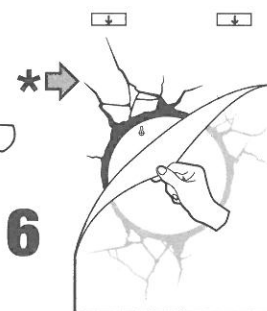
4



5



6



7

