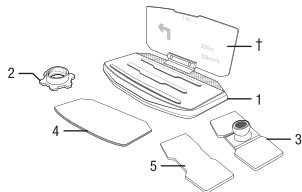


SMART PHONE HEADS UP DISPLAY



- 1. HUDSPI Platform
 - 2. Lock Ring
 - 3. Pedestal Base
 - 4. Stick Grip Pad
 - 5. Extra Double Sided Adhesive
 - 6. Extra Reflective Film*
 - 7. Microfiber Cloth*
- * Not shown in Overview Image
† Simulated Graphic

INTRODUCTION

HUDSPI is a universal vehicle accessory that turns your smartphone into a HUD (Heads Up Display). Using any HUD compatible smartphone app, place onto the HUDSPI's non-slip mat to display your navigation, speed, or other driving data onto the HUDSPI's specially treated reflective plexi-glass display surface.

NOTE: Apps not designed for *HUD* use will appear reversed. (Not Recommended)

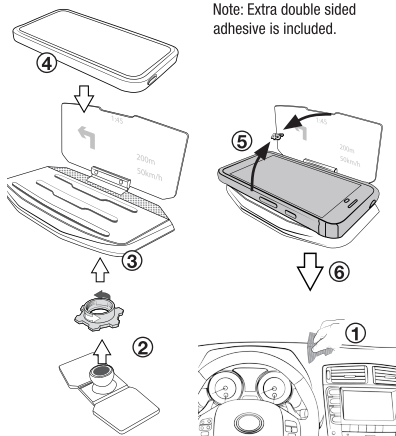


IMPORTANT!
DO NOT RETURN PRODUCT TO THE RETAILER
IF YOU NEED ASSISTANCE OR REPLACEMENT PARTS
CALL US TOLL FREE: 1-800-621-3695 X3
HOURS MON-FRI 9AM-5:30PM (PST) SATURDAY 9AM-2PM (PST)

INSTALLATION: PEDESTAL BASE

1. Clean mounting area before proceeding.
2. Insert pedestal base through the locking ring.
3. Insert pedestal base assembly into the bottom of the HUDSPI device & tighten the lock ring.
4. Place smartphone on top of HUD display to help visualize the following steps.
5. Adjust plexi-glass display at 45° angle or position angle to best suit proper viewing angle.
6. Place HUDSPI device on dash or preferred location.

Note: Extra double sided adhesive is included.



INSTALLATION: GRIP PAD

1. Clean mounting area before proceeding.
2. Peel and remove adhesive from stick grip pad, then align to the bottom of the HUD device. **NOTE: Non adhesive side facing downwards.**
3. Place smartphone on top of HUDSPI display to help visualize the following steps.
4. Adjust plexi-glass display at 45° angle or position angle to best suit proper viewing angle.
5. Place HUDSPI device on dash or preferred location.

